

## DATASHEET

# Scanlock M2 Global

## Spectral Analysis Software

### New Features

- Remote control via telecommunication networks
- Playback function allows display of RF activity in compressed time
- Automatic saving of spectrum data with report tags, audio samples and displays
- Improved report tag facilities

### Other Features

- Signal logging - for room 'characterisation' speeding up subsequent sweeps
- Frequent measurement - real time or 'post sweep'
- 3D spectral displays
- Spectrum tagging notes with automatic spectral information and the ability to record audio samples
- Differential display shows only changes in RF spectrum - real time or between sweeps

Building on the advanced features of Scanlock M2 Spectral Analysis Software the new M2 Global Spectral Analysis Software provides a number of enhancements, enabling remote sweep capability, continuous monitoring and more effective data analysis.

### New Scanlock M2 Modem Control

Control of and reporting from a remote Scanlock M2 can now be carried out via telecommunication networks. A Scanlock M2 equipped with a suitable modem can be positioned in a target area and controlled via telephone from a distant PC running M2 Global Software. Continuous scans can be performed in real time or the PC can dial up a Scanlock M2 automatically at set or random intervals to carry out scans. All scan data can be saved directly to disk for later analysis using all the spectral analysis tools, including the latest Playback features.

### Playback

The new Playback features of M2 Global software allow users to 'playback' multiple scans in sequence. A series of scans previously captured by a Scanlock M2 saved to the same folder on a PC disk is presented in sequence to review RF activity over the time period covered by all scans. This allows burst and intermittent signals to be identified. The user can move backwards as well as forwards through the scan series and pause the playback at anytime.



making it safe to talk

AUDIOTEL  
INTERNATIONAL



# SCANLOCK M2 GLOBAL SPECTRAL ANALYSIS SOFTWARE

## Report Tags

The facilities of M2 Global Spectral Analysis for adding notes and tags to scan displays are further refined making the generation of reports easier and more flexible.

## Peak Hold

Peak Hold scans can now be saved for later analysis enabling the addition of report tags and using the peak hold scan for comparison with later scans.

## After Sales Support

Technical Support business hours

Greenwich Mean Time

Monday - Thursday 8.30am - 5.15pm

Friday 8.30am - 12.30pm

Email: [suport@audiotel-international.com](mailto:suport@audiotel-international.com)

## Training

Audiotel International is able to offer full training in the operation of our products together with general countermeasures training and seminars.

## Contact Details

Audiotel International  
Corby Road  
Weldon Corby  
Northamptonshire  
NN17 3AR  
United Kingdom

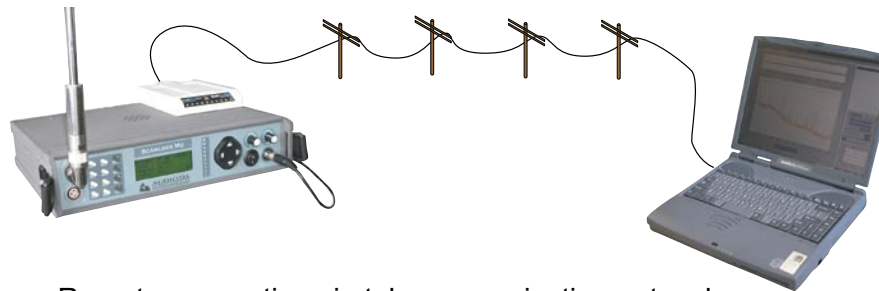
Telephone: +44 (0) 1536 266 677

Fax: +44 (0) 1536 266 711

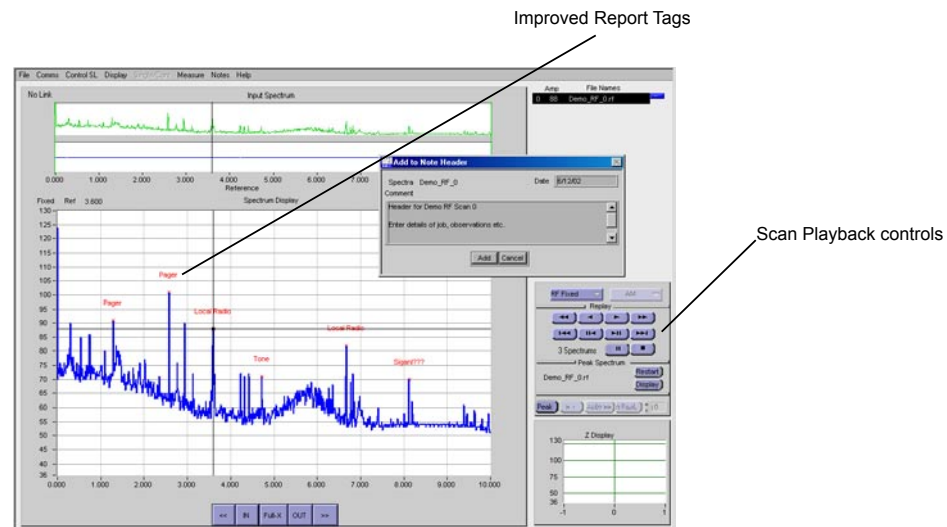
Email: [sales@audiotel-international.com](mailto:sales@audiotel-international.com)

Web: [www.audiotel-international.com](http://www.audiotel-international.com)

Due to our policy of continuous improvement, all specifications are subject to change without notice.



Remote connection via telecommunication networks



making it safe to talk

AUDIOTEL  
INTERNATIONAL

